



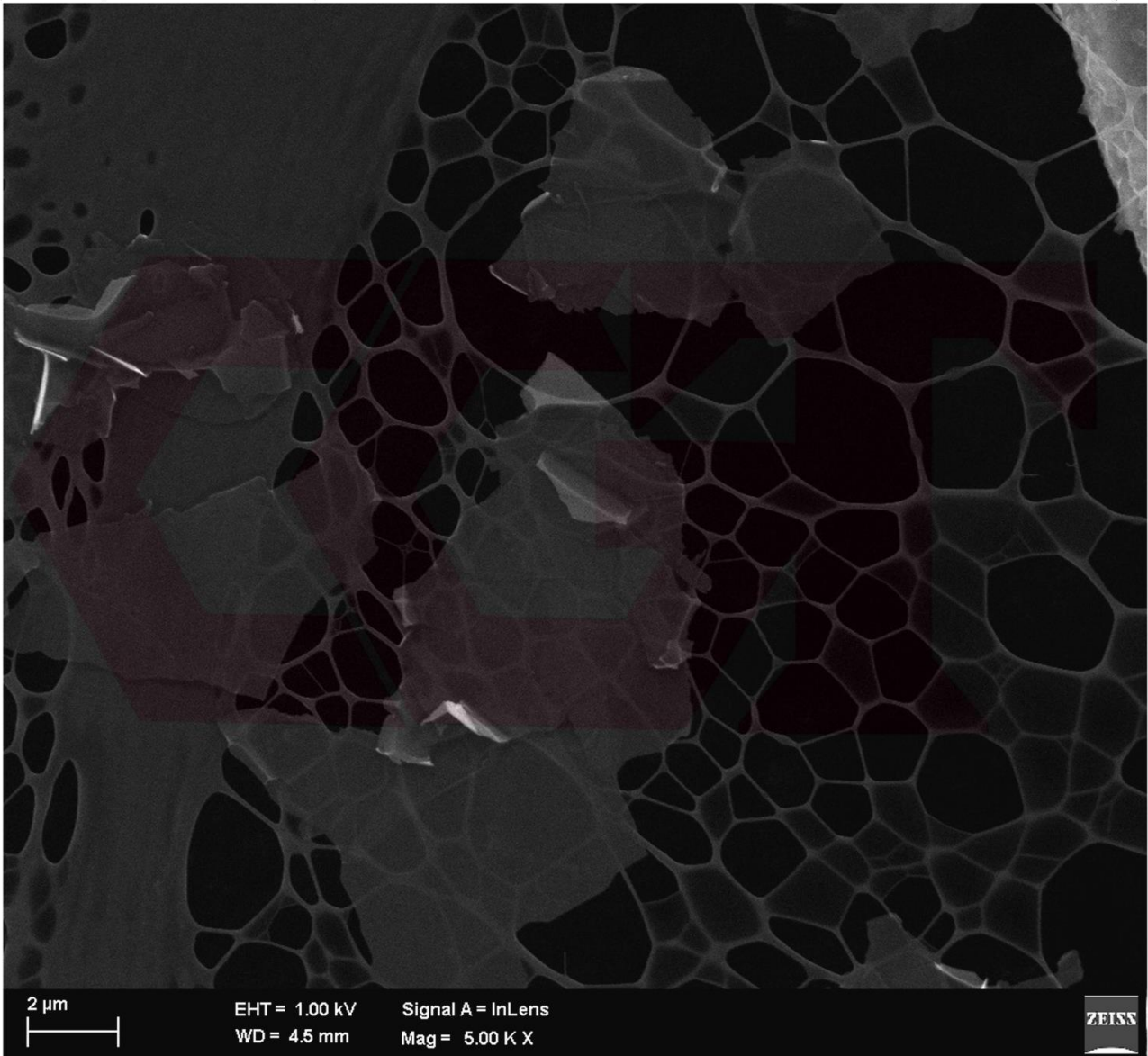
Certificate of Analysis

Graphene

Thickness	< 10nm
Purity	> 99%
Diameter	5-50 μm
Electrical Conductivity	$0.6 \cdot 10^6 \text{ S/m}$
Physical appearance	Black fine or granulated powder
Melting point	> 3600 $^{\circ}\text{C}$



Certificate of Analysis



2 μ m

EHT = 1.00 kV
WD = 4.5 mm

Signal A = InLens
Mag = 5.00 K X

ZEISS



Certificate of Analysis

